

## **Conversion of Zero Point Energy in additional Kinetic Energy of electrons**

### **Topic**

Methods are discovered and working Equipment Hours are developed, Which at the date of this request for Patent already in operation are daily , (though not public knowledge), which is a small part of the Zero Point Energy immediately foreseeable space into additional kinetic energy electrons.

One of these methods, which is the essence of this application is, the oscillation of an electromagnetic field within the confines of a primary permanent magnetic field, wherein the so-called "lines" of the two said fields, for both directions of the electro-magnetic field, should be. parallel as much as possible.

### **Remark**

Converting the inexhaustible energy of the free space, which is also referred to as 'vacuum' energy into usable electrical energy is now in the early 21st century the most important scientific research purpose. This patent application relates to a description of a basic principle and a single basic type of device. Will follow with fairly high speed, several patent applications ,as various technologies are not only identified but are applied without public fair. been useful Despite working devices exist already, which was established by the Patent Authorities, as well as in Washington, as well as in Munich can be shown to examination on the functioning, patent applications are in these cities about this most important subject hitherto ignored or denied.

Reason. which is released in the U.S., both

as in Europe: "Do not explainable with the current state of knowledge in Physics"!

resume

When an electron , which moves in an electro- magnetic field , is present at the field direction (counter- current) of a at the same time and in the same place a permanent magnetic field in move, absorbs said electron \* a quantity of ether , and the elastic spatial constitution of said electron becomes larger . This absorption is via the axial inlets of the ether \* "" - constitution , which is called electron. Said axial inlets are also the locations that are responsible for the concept of \* negative charge ." However, when thereafter said electron with the resulting expanded combustion constitution in the same direction , as is indicated by said permanent magnetic field , moves and thus little or no relative speed between the movement of said electron , and the flow of the primary permanent magnetic field and there is no or almost no force acts on said electron exercised , then shrinks the spatial constitution of the electron elastic

back in to the constitution sizes, which belong to the local density ether , as well as the falling velocity of the respective electron. Here, the former absorbed during this movement ( for power) aether emitted by the perimeter / equatorial outlet slit of the spatial constitution called electron , which is the angular momentum and thus increases the kinetic energy of it . The resulting overall movement of said electron is of the saw- tooth type with continuously increasing amplitude in the direction of the said permanent magnetic field . The increased kinetic energy, makes it possible for said electron to pass through a diode , and thereby to charge , leading to useful DC power is obtained a capacitor. The yield of the obtained electrical energy is proportional to the square of the frequency of the oscillations of the respective electro- magnetic field .

description

(a) Introduction

Classical Physics is hoarse rating and has accepted several dogmas that are faulty, so that all researchers are extremely handicapped either related to the subject: Utilization of the zero point energy.

The zero point energy is' But all in different places in Classical Physics for the day. Three examples will be given here: one in Physics, one in Doctrine and Electricity in Astronomy.

Physics: Planck's well-known formula with respect to the energy of wave phenomena:

$$E = \frac{h\nu}{2} + \frac{h\nu}{e^{\frac{h\nu}{kT}} - 1} \quad 6,62 \times 10^{-34} \text{ J/sec}$$

. h is Planck's Constant,

$\nu$  is frequency; k Boltzmann,  $1,38 \times 10^{-23} \text{ J/mol.K}$ , T is absolute temp.

When  $T = 0$ , then  $E = h\nu / 2$ , which is the zero point energy.

Electricity Leakage: (when switched off and shorting a circuit in which an electric current was therefore enters self-induction, which dissipates:

$$\int_0^\infty i_1^2 e^{-2\frac{R}{L}t} R dt = i_1^2 R \int_0^\infty e^{-2\frac{R}{L}t} dt = \frac{1}{2} L i_1^2.$$

Where does this chain are left to come from? (Prof. Dorgelo, TU Delft, 1952, "Electricity." Page 172) It is assumed that this energy magnetic energy existing in the 'non-material', thus energy is that the 'vacuum' / space / aether has.

Herein:  $i_1$ , is former flow, R is ohmic resistance, L is the inductance. Astronomy: A quantum mechanical equation (power function) on energy in space at a particular 'Redshift' late next series development

Cart:  $\omega_i = \omega_0 + q_1 x + q_2 y$ ; Where:  $x = \left\{ \left( \frac{\alpha_1}{\alpha_0} \right)^2 - 1 \right\}$  en  $y = \left\{ \left( \frac{\alpha_2}{\alpha_0} \right)^2 - 1 \right\}$ .  $\alpha$  is

the "fine structure constant",  $\alpha = \frac{e^2}{hc}$ ; e is elementary charge; c \* speed of

electro-Nonmagnetic waves in 'standard room' \*\*\*;  $\alpha_0$  "is today's value;  $\alpha_2$  value at the given redshift z;  $q_1$  and  $q_2$  are coefficients for the relativistic correction and some electron configuration. the term,  $\omega_0$  in the above equation indicates here the zero-energy.

Electro-magnetism is reasonably understood by the Classical Physics,

However, permanent magnetism but to a minor degree.

For example, the immediate restoration of the energy of a permanent magnet made after this work is not understood and not touched. While the existence of the aether is denied, the Classical Physics have been compelled to assign properties

to the "vacuum" factors:  $\mu_0$  and  $\epsilon_0$  for the permeability and the permittivity:  $c^* = \frac{1}{\sqrt{\mu_0 \epsilon_0}}$

This is a contradiction in terms. "Something that does not exist can not have a performance? The technology of this invention involves the cooperation of permanent magnetism, electro-magnetism, (waveform, frequency and amplitude) and polarization of motion 4', bringing very low ohmic resistance with it.

Indications:

\*) Electron: A spatial constitution of two closed in themselves and rotating vortex rings, which roll off against each other. aether which is absorbed by two axial inlets, which is emitted in a curved radial direction (pinwheel motion) by peripheral, or equatorial outlet slit again. The main axis of rotation (magnetic moment) passes through the axial inlets, but there is a second axis of rotation perpendicular to it, relative to which the vortex rings generated continuous helical coils.

The two axes of the two sine-movements in two mutually perpendicular planes, which are  $90^\circ$  out of phase.

This composite fluid-mechanical movement brings the Magnus effect along with it, and partly as a result, the resulting overall motion of the electron a spiral, both in space and in a matrix of atomic

nuclei. Figure 1 shows the constitution of the electron.

17-12-05; 11:42

;# 10

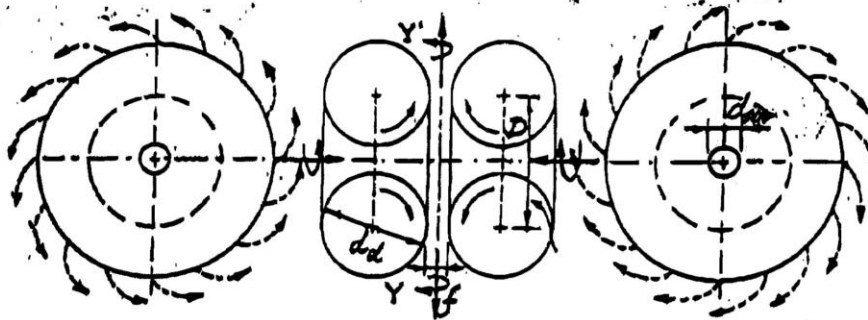
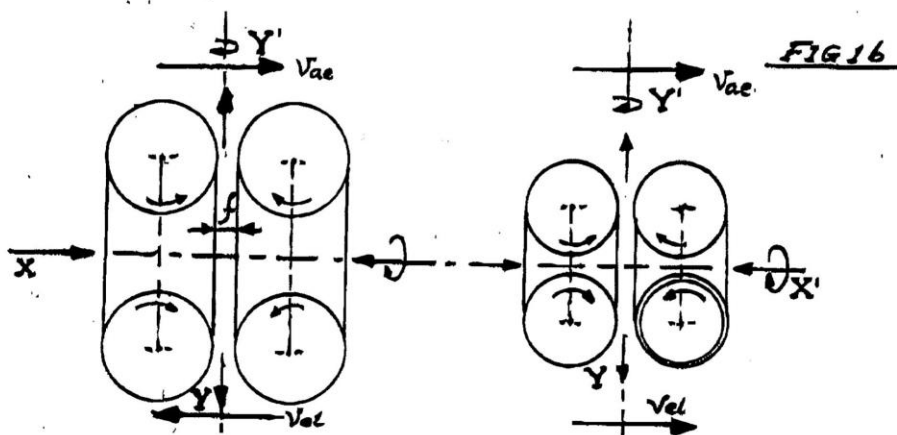
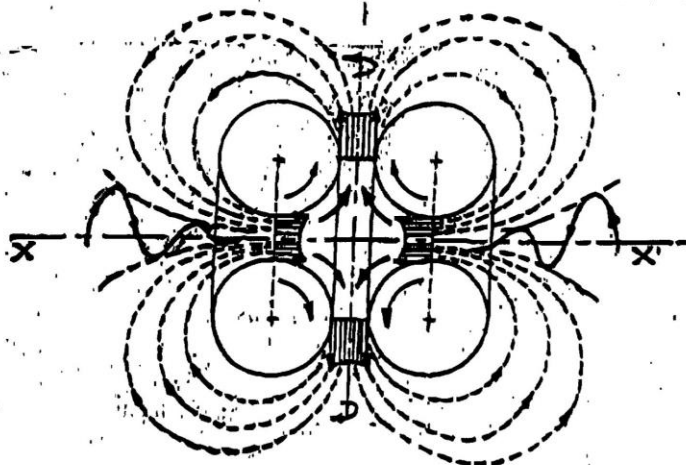


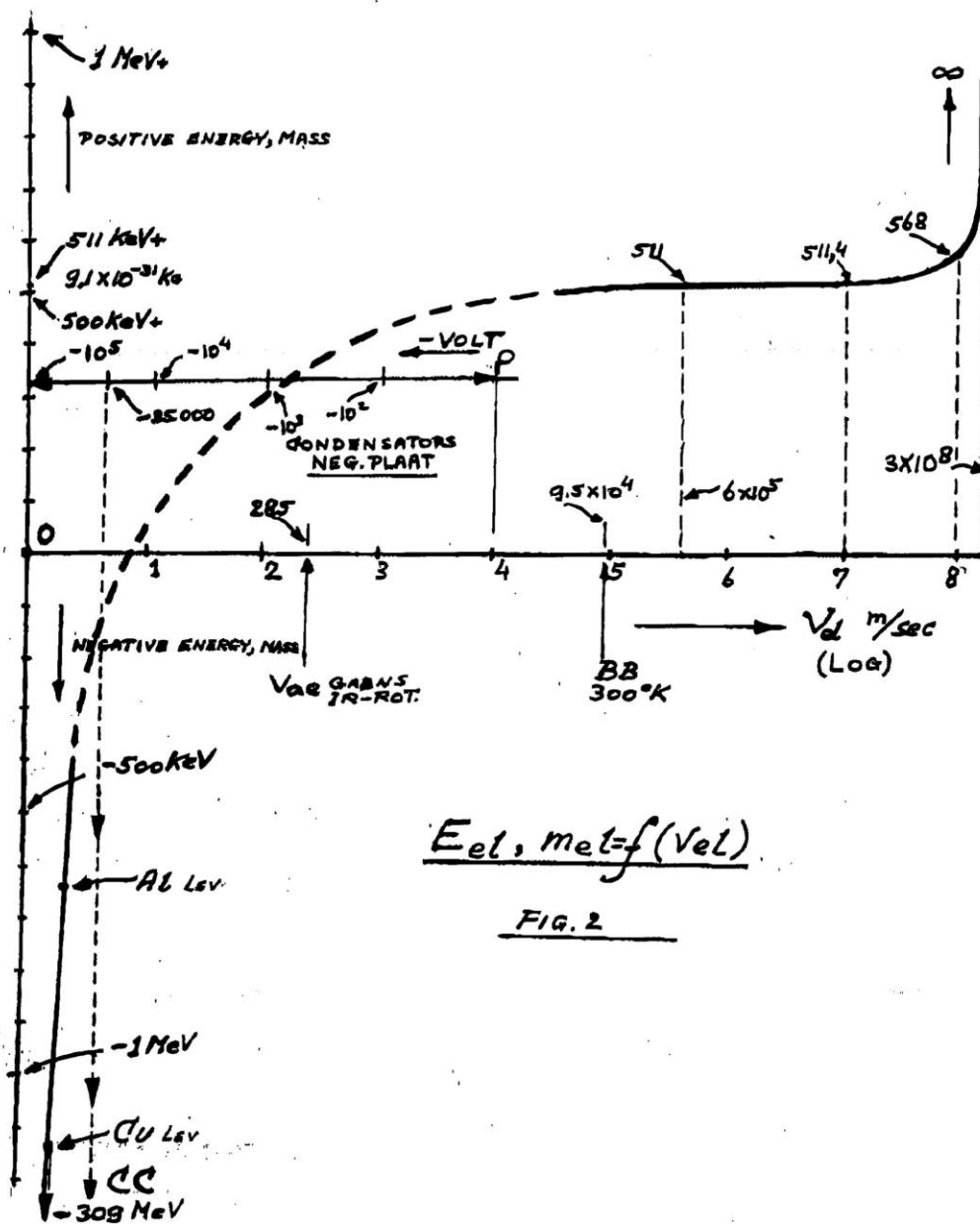
Fig. 1a



1030697

The electron can have both positive and negative mass, in contrast to the proton which only a positive "mass" can. The "mass", the energy equivalent of which is 511 keV, corresponding to a electron moving at a speed of roughly  **$6 \times 10^8 \text{ m/sec}$** .

With little or no movement of the 'mass' gets a negative value, there prevails one under pressure, density between the vortex rings with respect to the pressure, density of the ether in the immediately surrounding area, Figure 2 shows a proximity see curve mass the electron as a function of the speed of movement.



The mass at higher speeds, is determined by  $m_c = m_0 / \sqrt{1 - v^2/c^2}$ .

At lower speeds, fluid-mechanical calculations which indicate energy levels, which with respect to known equivalent of 511 KeV show signs come. Evidence for the existence of negative 'mass' is plenty, eg with an asymmetrical plate capacitor, where in the Earth graviteitsveld the negatively charged plate located on the bottom and the capacitor is charged with at least - ~ 35,000 volts, (and there is a high density of electrons in the underlying plate), the entire capacitor anti-gravitational

upward .

Cause: negative mass of the electron. See, U.S. Patent T. Townsend Brown, No. 2,949,550, 16-08-1960 \*\*) Aether:., The non-material "fluid of the 'Fluidum Continuum' of this Universe, with which it has been completely filled, though it with different densities depending on the location within this Universe.

The physical properties of conduct the Aether are: (1) homogeneity, (2) Coherent Heid, (3) Frictionless, (4) Compressieerbaarheid.

\*\*\*) Standard area: this space is in this universe, in which the density, indicated with  $\rho$  , the value  $\rho_0$  and where the propagation speed of an electro-magnetic field,  $c$ , the value  $c^*$  is , at a standard

time-lapse speed increment,  $\Delta t$  is true, that,  $\frac{\Delta t}{\Delta t^*} = 1$  is.