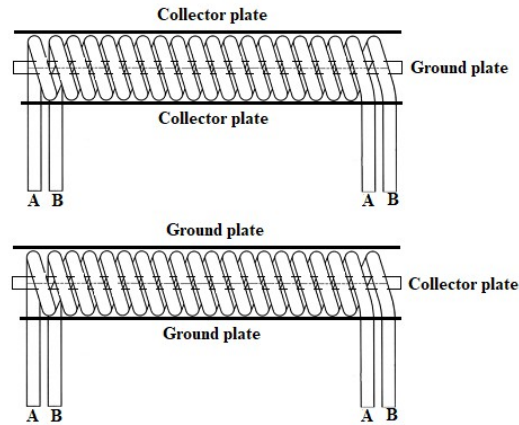


When a coil is not only a coil



In the drawing above the external collector plate and external ground plate is made of aluminium duct tape which forms a perfect shield over the solenoid coils. The internal collector plate and ground plate are made as a core coil perpendicular to the solenoid coils and so next to no inductance between them, only capacitance.

A & B coils are fed with frequencies of the same amplitude but with a difference of 7.83Hz, their resulting beat frequency. Their duty cycle also has to be adjusted by the percentage difference between the frequencies. The result of the duty cycle and the frequency difference, causes a wave movement perpendicular the the coils and through the center (coils form a tubular wave guide) which will give a resulting duty of 50% to DC (the famous AC and DC at the same time).

The waves move in both the x and y axis through the solenoids like a photon injected at a constant velocity A between two capacitor plates with an AC pulse at frequency B.