

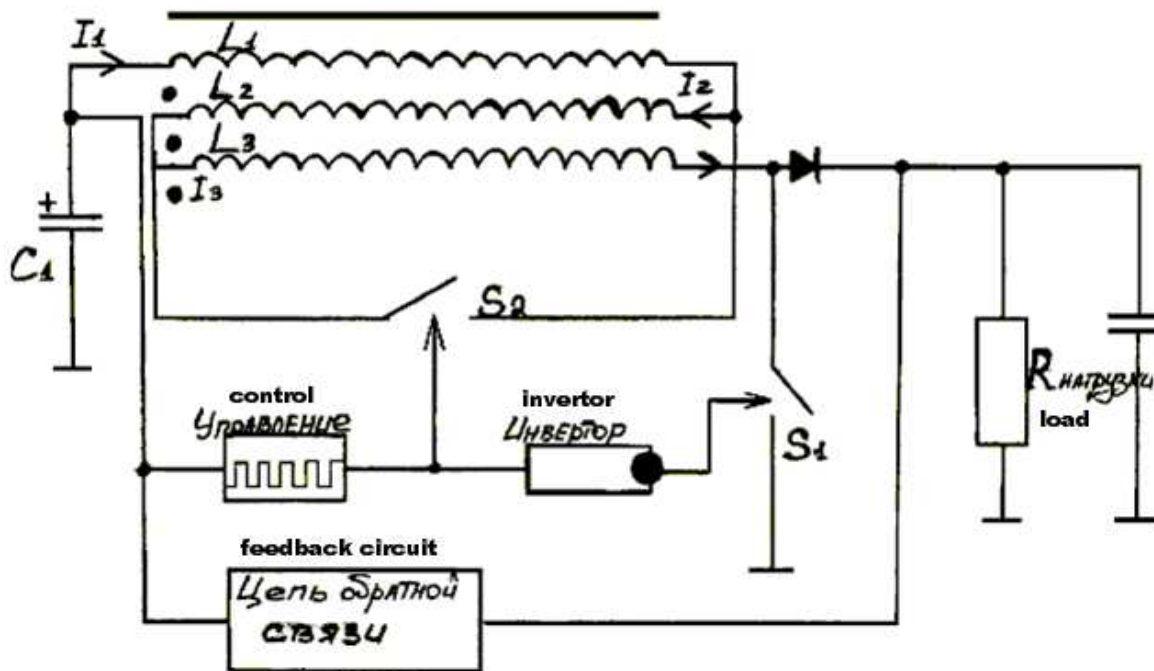
Power generator based on nonlinear inductance

translated document from <http://izob.narod.ru/p0012.html>

Working model, by Valery, free-energy@list.ru

Developed and assembled device with efficiency greater than 1. It works in a self-sustaining mode, producing enormous amount of energy that powers a light bulb.

Блок схема преобразователя энергии
Structure of energy converter



At time t_1 :

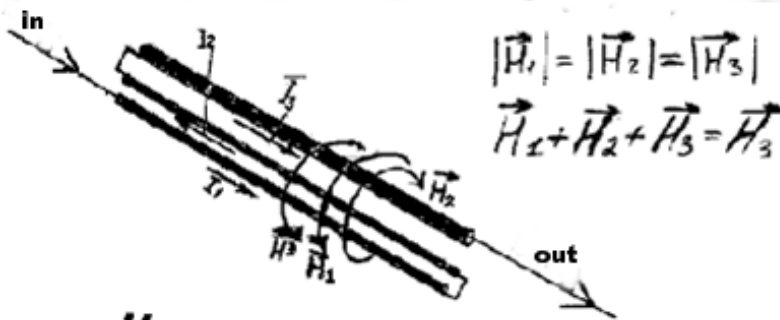
The current from the pre-charged capacitor C_1 flows through $L_1 - L_2 - L_3$, wherein the switch S_1 is closed, while S_2 open: Since L_1 and L_2 are included in opposite (accumulation of energy in the L_1 and L_2 does not occur, since their magnetic fields cancel each other) energy stored in coil L_3

At time t_2 :

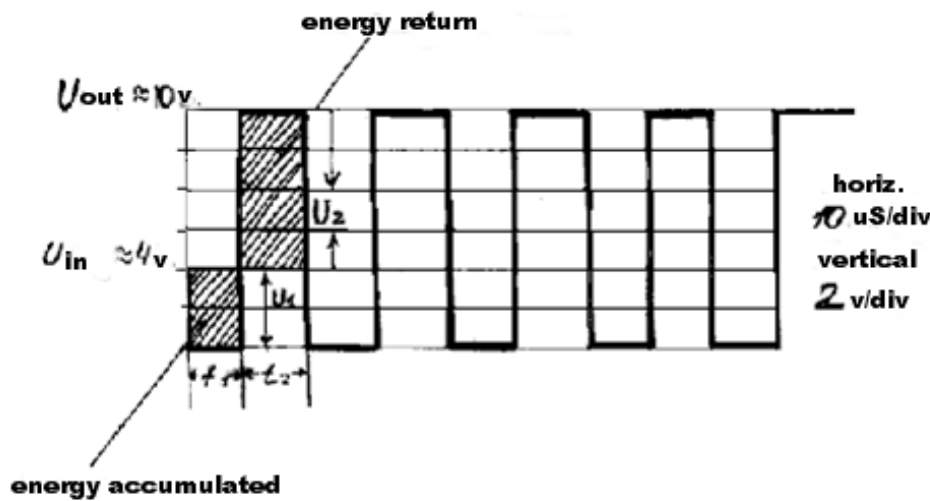
Opens S_1 and closes switch S_2 . This raises the voltage in the coils L_1 and L_3 (since S_2 is closed) coils L_1 and L_3 is now operating in phase. Since the current in the coils of the same, we believe obtaining EMF at time t_2 twice bigger towards the accumulation of energy consumed for the time t_1 .

Here presented one cycle of the operation. The control circuit maintains the repetition of the above process. The feedback loop returns a portion of the received power at the input of the circuit, for regular cycles. The increase in power consumed by load.

Simplified model of trifilar coil



H - Magnetic Field Strength



Pulse parameters selected so that $t_1 = t_2$

this defined by control circuit

$$W_1 = P_1 t_1 \quad W_2 = P_1 t_2 \quad \text{since } t_1 = t_2, \text{ then } \frac{W_1}{W_2} = \frac{P_1}{P_2} = \frac{U_1}{U_2}$$

$$\text{if } I_1 = I_2, \text{ then } \frac{W_1}{W_2} = \frac{U_1}{U_2}$$

