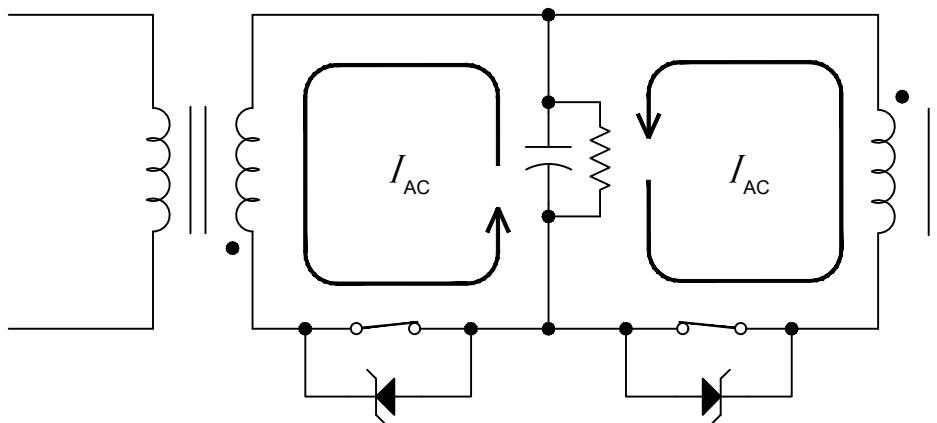


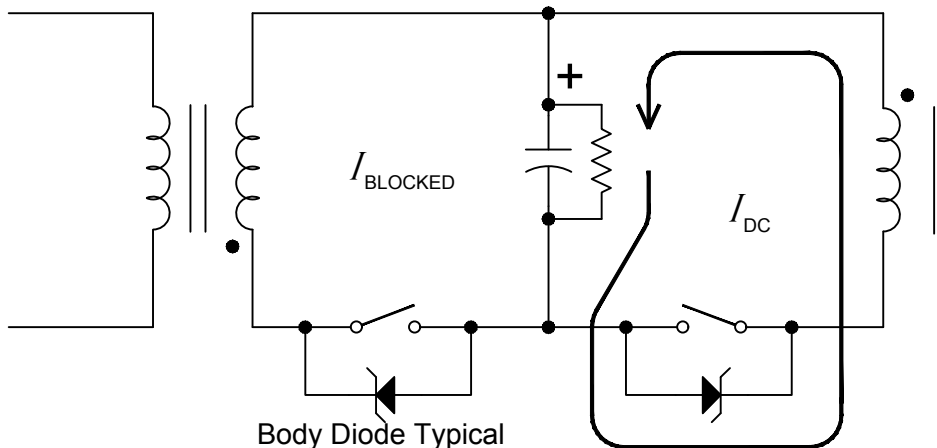
## Backend Synchronous Diode Schematic



99% Condition  
MOSFETS On

Circulating AC  
Currents Cancel

Secondary is  
Shorted out



5 ns to 1000 ns  
Harvest Pulse  
.1% - 5% Condition  
MOSFETS Off

DC Pulse Collected  
by Capacitor

Secondary is  
connected to  
Large Capacitor

Synchronous Diode  
Simplified Theory of Operation  
drafted 8/19/2016 by Mark McKay